



---

## DEMS-RSMC TROPICAL CYCLONES NEW DELHI DATED 18.11.2023

**SPECIAL TROPICAL WEATHER OUTLOOK FOR NORTH INDIAN OCEAN (THE BAY OF BENGAL AND THE ARABIAN SEA) VALID FOR NEXT 120 HOURS ISSUED AT 0300 UTC OF 18.11.2023 BASED ON 0000 UTC OF 18.11.2023.**

### **SUB: DEEP DEPRESSION (REMNANT OF CYCLONIC STORM “MIDHILI”) WEAKENED INTO A DEPRESSION OVER TRIPURA AND ADJOINING BANGLADESH & MIZORAM**

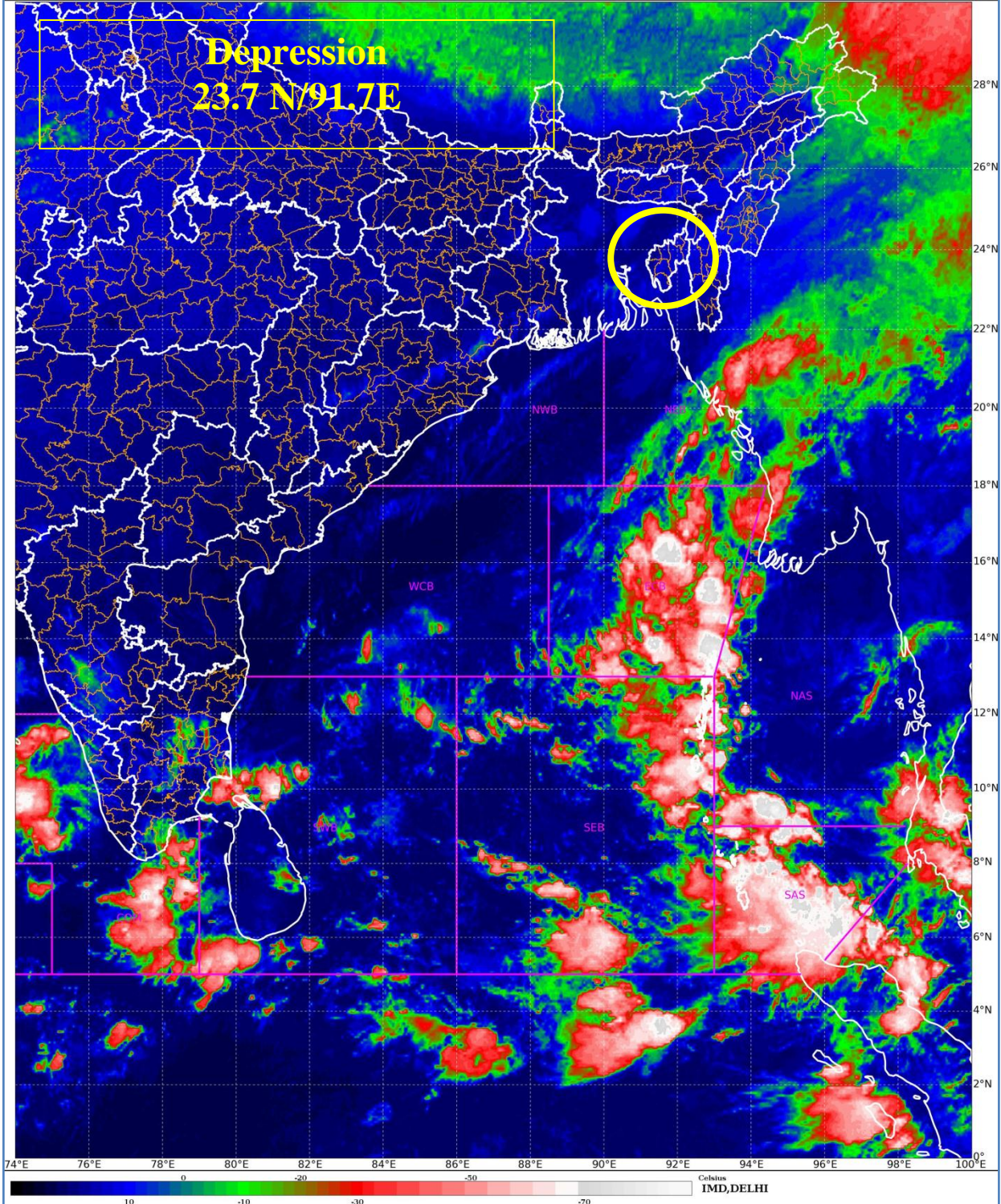
THE DEEP DEPRESSION (REMNANT OF CYCLONIC STORM “MIDHILI”) OVER TRIPURA & ADJOINING BANGLADESH MOVED NORTHEASTWARDS WITH A SPEED OF 10 KMPH DURING PAST 6 HOURS, WEAKENED INTO A DEPRESSION AND LAY CENTERED AT 0000UTC OF 18TH NOVEMBER OVER TRIPURA AND ADJOINING BANGLADESH & MIZORAM NEAR LATITUDE 23.7°N AND LONGITUDE 91.7°E, ABOUT 50 KM SOUTH-SOUTHEAST OF AGARTALA (42724) AND 160 KM SOUTHWEST OF SILCHAR(42619).

IT IS LIKELY TO MOVE NORTHEASTWARDS AND WEAKEN INTO A WELL MARKED LOW PRESSURE AREA OVER SOUTH ASSAM & ADJOINING MIZORAM-TRIPURA DURING NEXT 06 HOURS.

THE ASSOCIATED MAXIMUM SUSTAINED WIND SPEED IS 20 KNOTS GUSTING TO 30 KNOTS. THE WINDS ARE RELATIVELY STRONGER IN NORTHEAST SECTOR. THE ESTIMATED CENTRAL PRESSURE IS 1010 HPA. VERY ROUGH SEA CONDITIONS ARE PREVAILING OVER NORTHEAST & ADJOINING NORTHWEST BAY OF BENGAL AND ALONG & OFF BANGLADESH COAST AND ROUGH SEA CONDITIONS ALONG & OFF ADJOINING MYANMAR COAST AND SEA CONDITION WOULD GRADUALLY IMPROVE BECOMING ROUGH OVER NORTHEAST & ADJOINING NORTHWEST BAY OF BENGAL AND ALONG & OFF BANGLADESH COAST BY 0600 UTC OF 18<sup>TH</sup> NOVEMBER AND FURTHER IMPROVE THEREAFTER.

ASSOCIATED SCATTERED TO BROKEN LOW & MEDIUM CLOUDS WITH EMBEDDED ISOLATED WEAK TO MODERATE CONVECTION OVER ARUNACHAL PRADESH EAST ASSAM, NAGALAND AND MANIPUR.

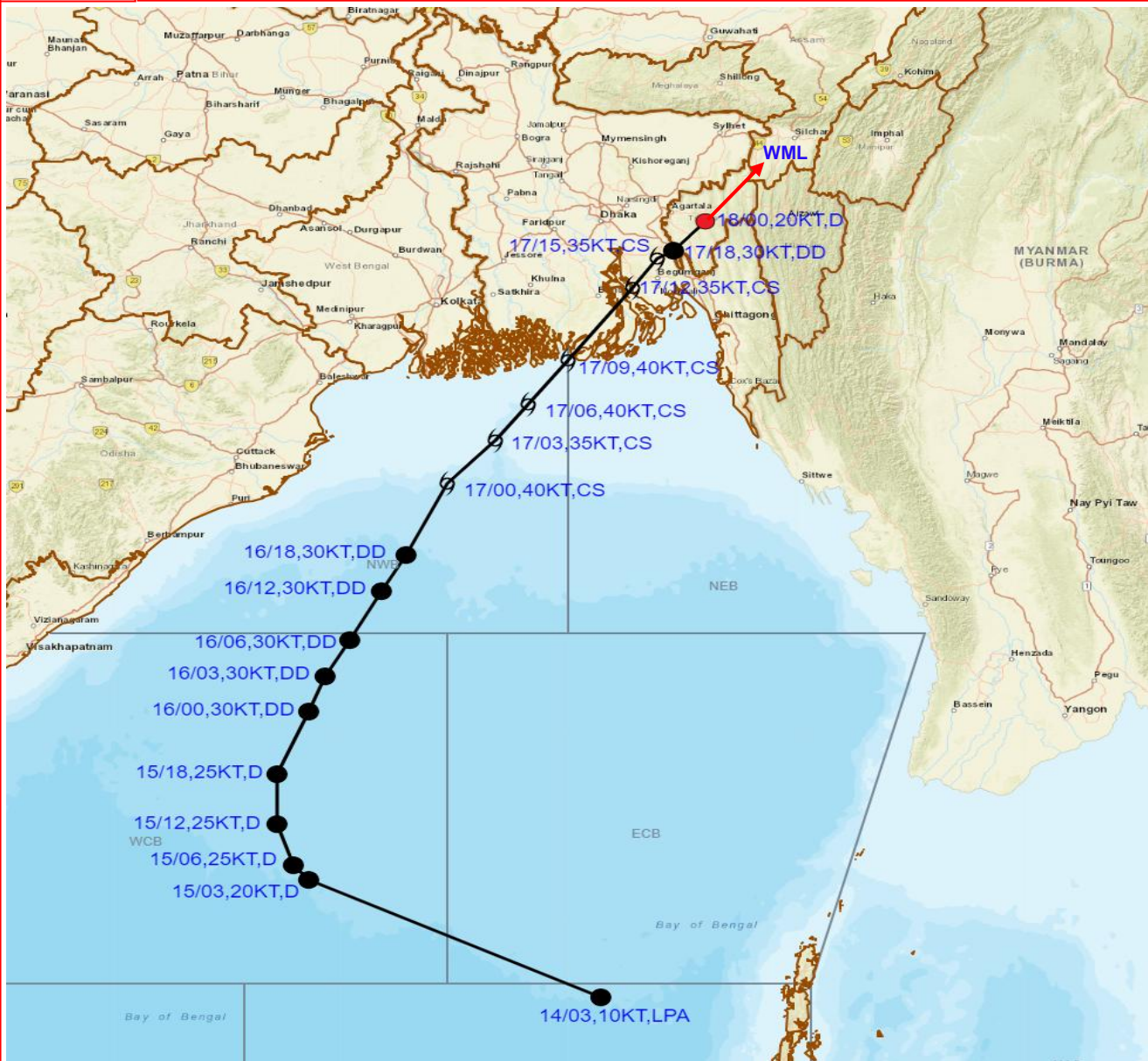
(SHOBHIT KATIYAR)  
SCIENTIST-D  
RSMC NEW DELHI



Cloud distribution: (a) Isolated: <25%, Scattered:25-50%, Broken: 51-75%, Solid:>75%, Convection Intensity: (a) Weak: Cloud Top Temperature (CTT) >-25°C, (b) Moderate: CTT: - 25°C to -40°C, (c) Intense: CTT: - 41°C to -70°C and (d) Very Intense: : Less than -70°C  
PROBABILITY OF CYCLOGENESIS (FORMATION OF DEPRESSION):NIL: 0%, LOW: 1-33%, , MODERATE: 34-66% AND HIGH: 67-100%  
This is a guidance Bulletin for WMO/ESCAP Panel Member countries. Visit respective National websites for Country specific Bulletins



**OBSERVED AND FORECAST TRACK AND INTENSITY IN ASSOCIATION WITH DEPRESSION (REMNANT OF CYCLONIC STORM "MIDHILI") OVER TRIPURA AND ADJOINING BANGLADESH & MIZORAM BASED ON 0000 UTC (0530 HRS IST) OF 18TH NOVEMBER 2023.**



DATE/TIME IN UTC

IST=UTC + 0530

L: LOW PRESSURE AREA

WML: WELL MARKED LOW PRESSURE AREA

D: DEPRESSION (17-27 KT)

DD: DEEP DEPRESSION (28-33 KT)

CS: CYCLONIC STORM (34-47 KT)

SCS: SEVERE CYCLONIC STORM (48-63KT)

VSCS: VERY SEVERE CYCLONIC STORM (64-89 KT)

ESCS: EXTREMELY SEVERE CYCLONIC STORM (90-119 KT)

SuCS: SUPER CYCLONIC STORM ( $\geq 120$  KT)

● LESS THAN 34 KT

○ 34-47 KT

⊙  $\geq 48$  KT

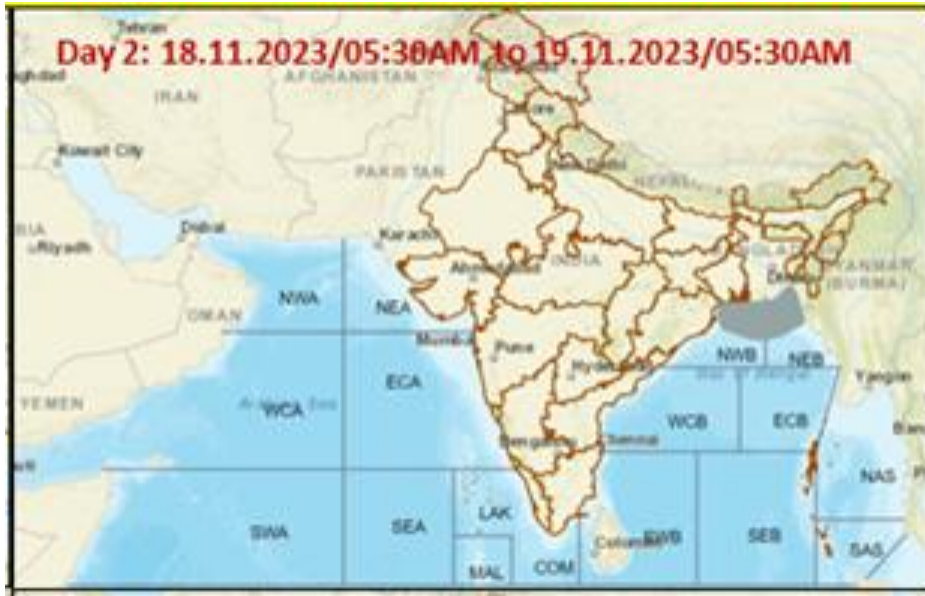
— OBSERVED TRACK

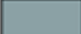



— FORECAST TRACK

▲ CONE OF UNCERTAINTY

Cloud distribution: (a) Isolated: <25%, Scattered:25-50%, Broken: 51-75%, Solid:>75%, Convection Intensity: (a) Weak: Cloud Top Temperature (CTT) >-25°C, (b) Moderate: CTT: - 25°C to -40°C, (c) Intense: CTT: - 41°C to -70°C and (d) Very Intense: : Less than -70°C  
 PROBABILITY OF CYCLOGENESIS (FORMATION OF DEPRESSION):NIL: 0%, LOW: 1-33%, , MODERATE: 34-66% AND HIGH: 67-100%  
 This is a guidance Bulletin for WMO/ESCAP Panel Member countries. Visit respective National websites for Country specific Bulletins

## FISHERMEN WARNING GRAPHICS



	Squally WX with wind speed 40-45 kmph gusting to 55 kmph
	Squally WX with wind speed 45-55 kmph gusting to 65 kmph
	Squally wind with speed 50-60 kmph gusting to 70 kmph
	CS with Gale wind speed 60-90 kmph gusting to 110 kmph

**Fishermen are advised not to venture into the marked areas.**